

UH115

Semi-automatic wafer / frame film mounter



HIGHLIGHTS

- ▶ No user dependent
- ▶ Fast lamination
- ▶ UV tape film take up
- ▶ Soft edge contact chuck

SPECIFICATIONS

- ▶ Automatic roller
- ▶ Frame style choice
- ▶ Thermal chuck
- ▶ Circular and linear cutter

microworld®
Grenoble -FRANCE
Tel. +33 (0)4 76 56 16 17
Contact@microworld.eu
www.microworld.eu



The Model UH115 features a semiautomatic one-pass lamination which provides an extra margin of safety when mounting particularly fragile wafers/substrates. Most mounters laminate the film in two passes, i.e. one pass as the film is laminated to the film frame and wafer/substrate and a second relaminating pass as the roller returns to its home position. The Model UH115, however, laminates on the first pass only; the second pass is contact-free.

Features

- Up to 12” wafer capability standard
- Automatic motor-driven, one-pass uniform film lamination
- Adjustable motorized roller speed and pressure
- “Crease line-free” lamination area
- Uniform film tension (operator variables eliminated)
- Temperature controlled platen
- Built-in circular cutter (wheel type) for cutting film on film frame
- Spring-loaded tensioner bar
- Vacuum securing wafer
- Build-in end cutter for film separation
- Accommodates film/protective layer wound on the outside or inside

Models

UH115	For wafer up to 6” (150 mm)
UH115-8	For wafer up to 8” (200 mm)
UH115-12	For wafer up to 12” (300 mm)

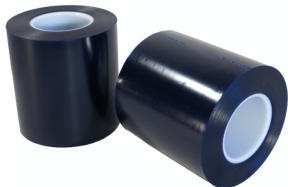
Configurations & options

- Protective film take-up roller assembly
Wrap the protective film of UV tape during take up
- Static eliminator by ionizing bar
Prevent ESD discharge during film take up
- Standard Wafer Stage/Chuck
Choice of standard chuck (from 2” to 12” following version)
- Thin Wafer Stage/Chuck

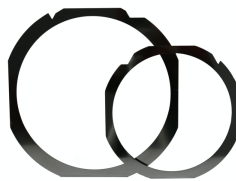
- SofTouch Edge Contact Wafer Stage/Chuck
For very sensitive wafer, only the edge touch the chuck for no damage on the active side
- Adapter for wafer frame
Adapat the style and size of user frame in the machine

Specifications

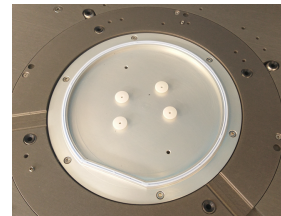
Wafer holding	Vacuum
Chuck temprature	Up to 60°C
UV tape capable	UV protection cover
Tape cutting	Rear linear knife & frame circular wheel
Roller pressure adjust	Mechanical (2 tension screws)
Roller speed	2 modes (slow/ fast)
Speed adjust	Internal adjustment – 2 speeds
Power supply	240 VAC / 50 Hz / 1.5A (single phase)
Vacuum	25 in Hg – 1/4" OD push in
Air	60 PSI @ 3 scfm (filtred and regulated) - 1/4" OD push in



Standard and UV tapes



Film frames



Edge contact chuck